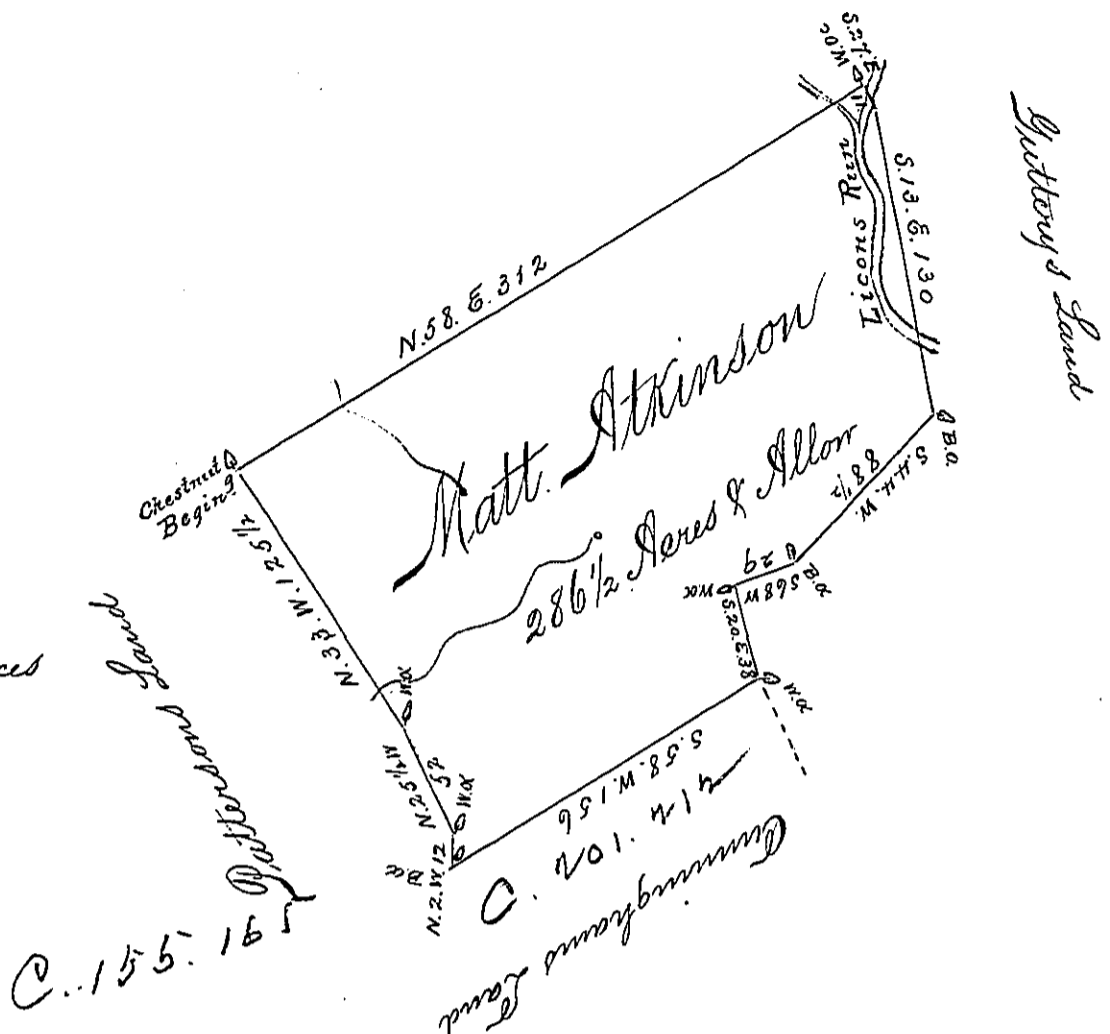


Courses & Distances

- N 58° E 312^{pts}
- S 27° E 11
- S 13° E 130
- S 14° W 88½
- S 68° W 29
- S 20° E 38
- S 58° W 156
- N 2° W 12
- N 28½° W 52
- N 33° W 125½



A Draught of a tract of land Situate in
 Ferranagh township Cumberland County
 Surveyed for Matthew Atkinson the 20th day of
 October 1782 (in Pursuance of an Order of Survey
 dated at Philad^a the 24th day of Nov^r 1767) Con-
 taining two hundred & Eighty six Acres & an
 half & the Usual Allowance of Six P^{ts} Cent for
 roads &c

p^r Jas. Harris D.S.

Jno Lukens Esq^r }
 Suror Gen^l }

IN TESTIMONY that the above is a copy of the original remaining on file in the
 Department of Internal Affairs of Pennsylvania, made con-
 formably to an Act of Assembly approved the 16th day of
 February, 1833. I have hereunto set my Hand and caused
 the Seal of said Department to be affixed at Harrisburg, this

first day of September 1896.

James W. Patton
 Secretary of Internal Affairs.